

Armyjet New User Manual

1. How to install Printer Manager

Note: Before you install Printer Manager, you need to **forbid digital signature** if you use Windows 10. Or you can't install printer manager. About how to forbid digital signature on your Windows 10, please read **Win10 Setting before PM Installation.pdf**.

Cleaning Parameters	2022/4/1 12:49	文件夹	
ICC Profile_photoprint	2022/4/1 12:49	文件夹	
Layout-2H	2022/4/1 12:49	文件夹	
Printer Manager	2022/4/8 13:57	文件夹	
Updater_headboard 2H	2022/4/1 12:49	文件夹	
Updater_mainboard-2H	2022/4/22 10:55	文件夹	
Waveform	2022/4/1 12:49	文件夹	
dotNetFx40_Full_x86_x64	2019/2/27 14:40	应用程序	49,268 KB
PhotoPrint Installation manual	2022/4/7 15:11	Microsoft Edge PD...	8,017 KB
Win10 Setting before PM Installation.pdf	2022/4/7 14:46	Microsoft Edge PD...	1,392 KB

(1) Open **A+PM20210616** file where printer manager locates.






< Printer Manager > A + PM20210616 >

▼

↺

🔍

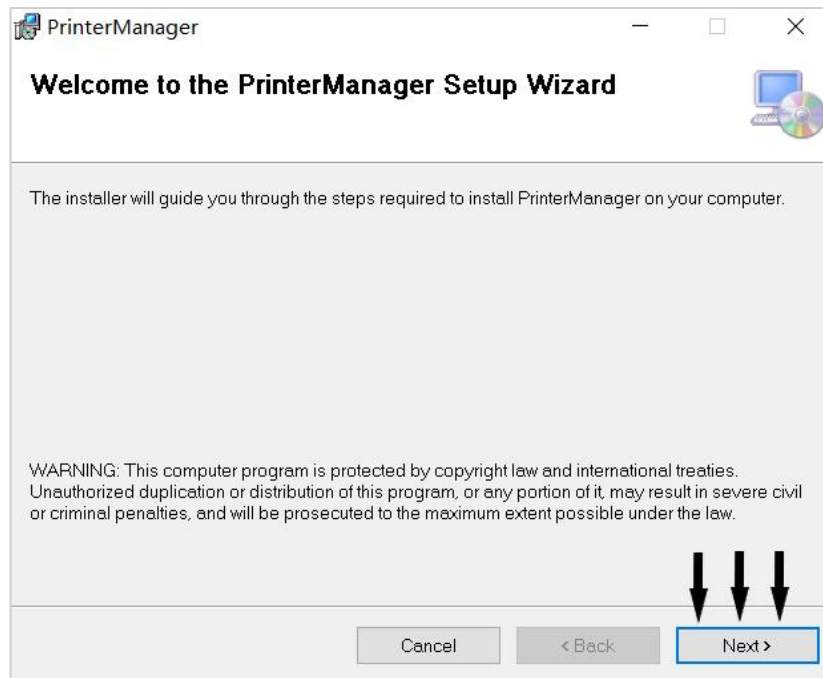
在 A + PM20210616 中搜索

名称	修改日期	类型	大小
 Layout	2022/4/22 10:51	文件夹	
 app	2020/2/24 15:31	ICO 图片文件	15 KB
 setup	2021/6/16 16:13	应用程序	418 KB
 SetupPrinterManager_x64	2021/6/16 16:13	Windows Installer ...	32,791 KB
 Vender	2020/2/24 15:31	XML 文档	1 KB

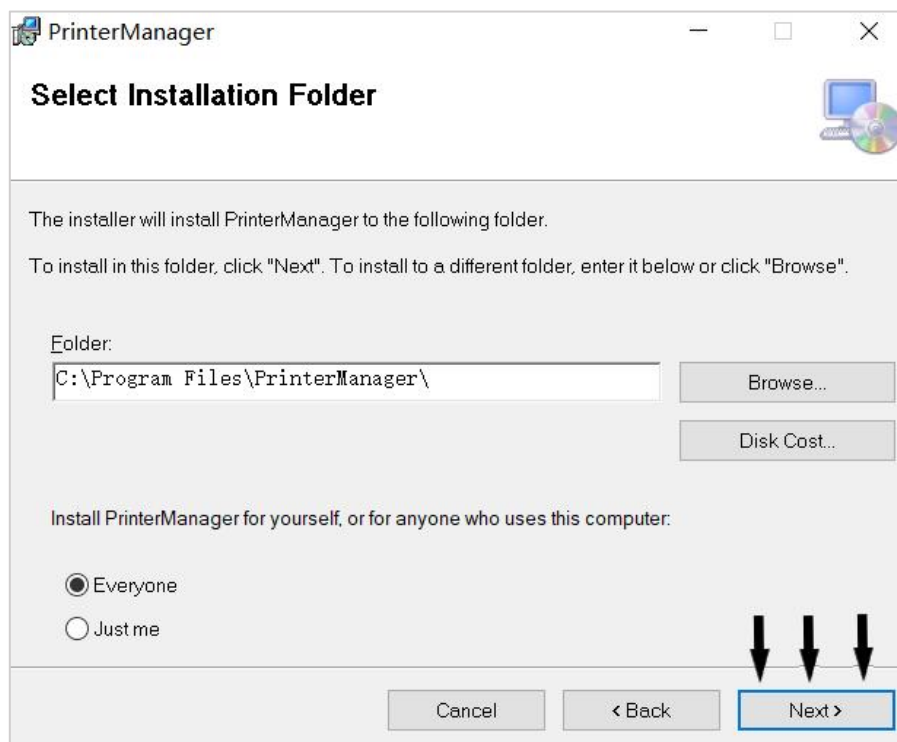
(2) Click **setup.exe** to install Printer Manager.

app.ico	2017/2/28 16:18	图标	15 KB
setup.exe	2019/12/16 14:31	应用程序	418 KB
SetupPrinterManager_x64.msi	2019/12/16 14:32	Windows Install...	27,536 KB
Vender.xml	2017/2/28 16:18	XML 文档	1 KB

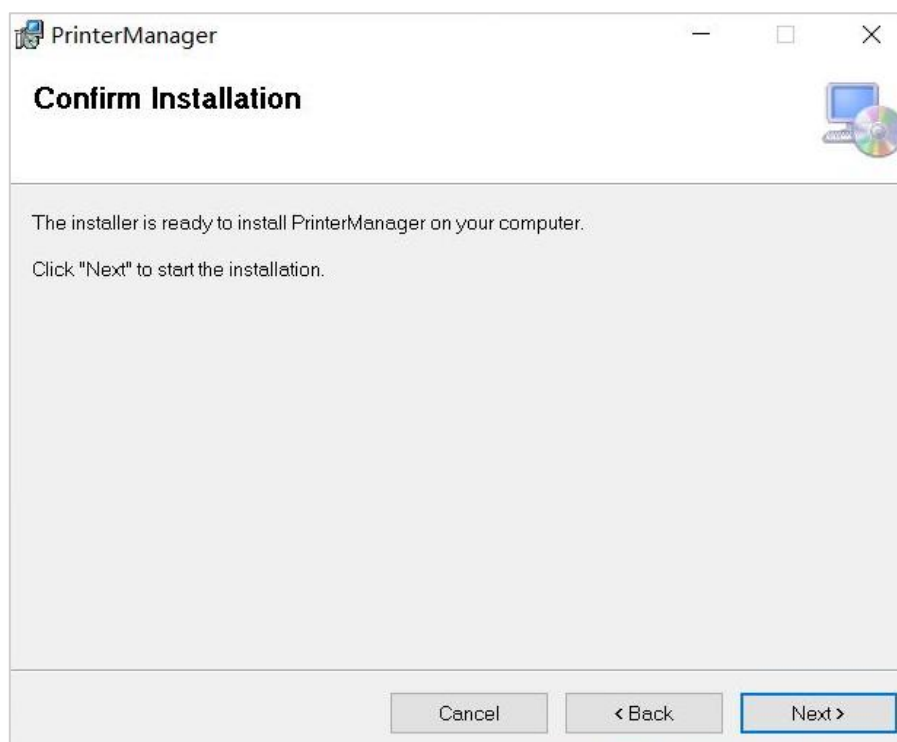
(3) When you see the following image, then click **Next**.



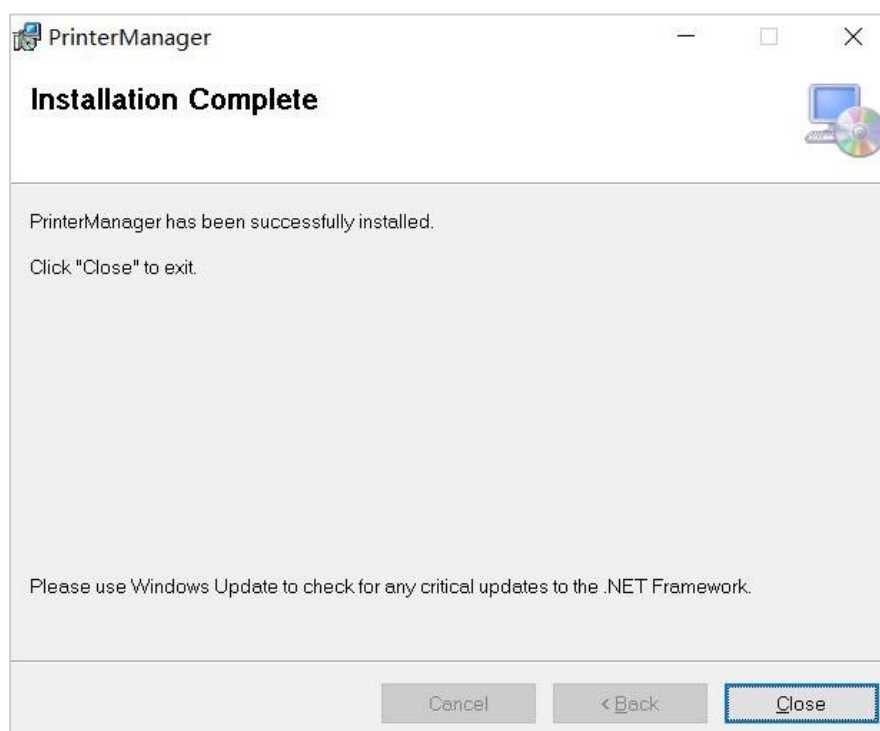
(4) When you see the following, click **Browse** to choose where you want to install printer manager. And then click **Next**.



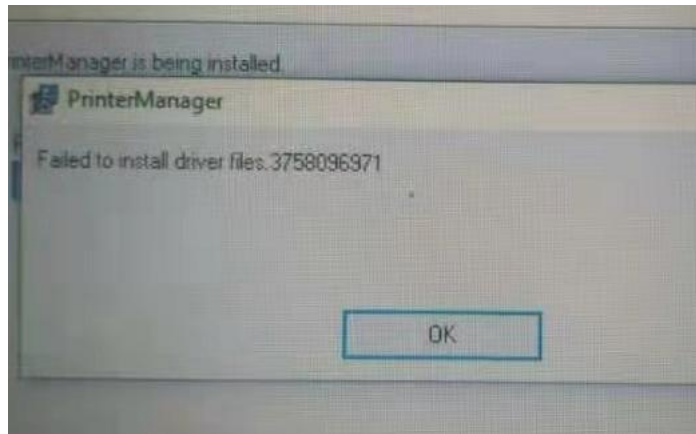
(5) When you see the following, click ***Next*** to continue.



(6) After installation complete, click ***Close***.













During the installation, if you see the following, it means that you need to install computer environment **dotNetFx40_Full_x86_x64**.



件 > 2H 软件资料整理_04012022 > 2H 资料整理

搜索"2H 资料整理"

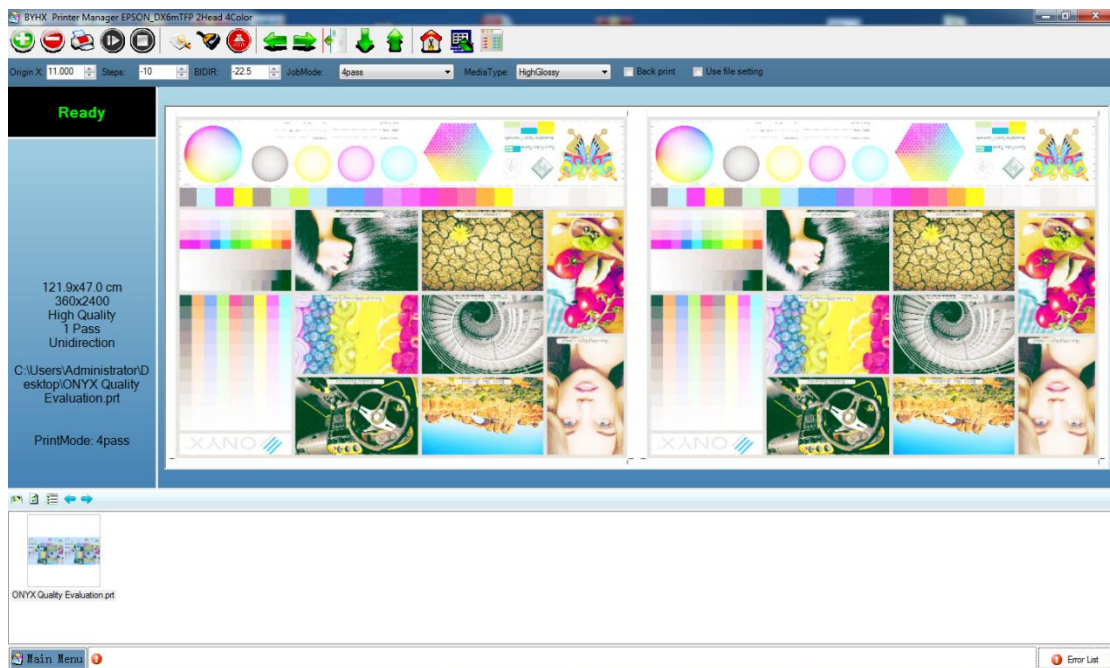
名称	修改日期	类型	大小
 Cleaning Parameters	2022/4/1 12:49	文件夹	
 ICC Profile_photoprint	2022/4/1 12:49	文件夹	
 Layout-2H	2022/4/1 12:49	文件夹	
 Printer Manager	2022/4/8 13:57	文件夹	
 Updater_headboard 2H	2022/4/1 12:49	文件夹	
 Updater_mainboard 2H_V10.0	2022/4/1 12:49	文件夹	
 Waveform	2022/4/1 12:49	文件夹	
 dotNetFx40_Full_x86_x64	2019/2/27 14:40	应用程序	49,268 KB
 PhotoPrint Installation manual	2022/4/7 15:11	Microsoft Edge PD...	8,017 KB
 Win10 Setting before PM Installation.pdf	2022/4/7 14:46	Microsoft Edge PD...	1,392 KB

2. How to Use Printer Manager

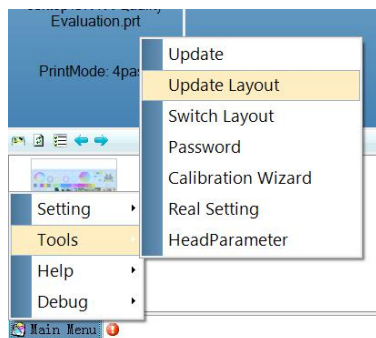
(1) Click the following icon



(2) After you enter main menu, then we need to set the printer.



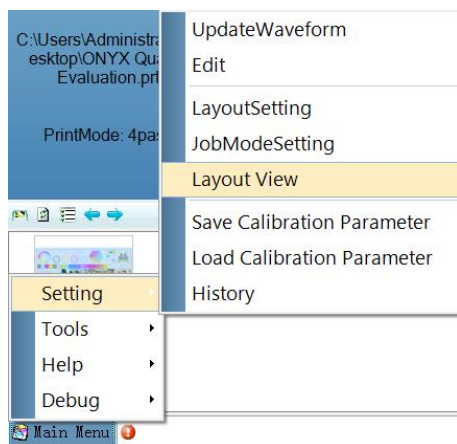
① Update head layout like the below. If your printer is single head, then choose Layout-1H. If It' s double heads, then choose Layout-2H.

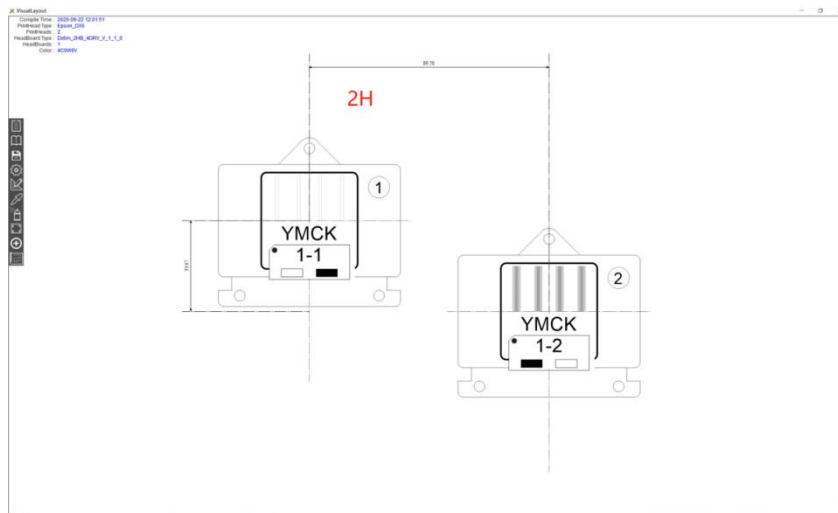
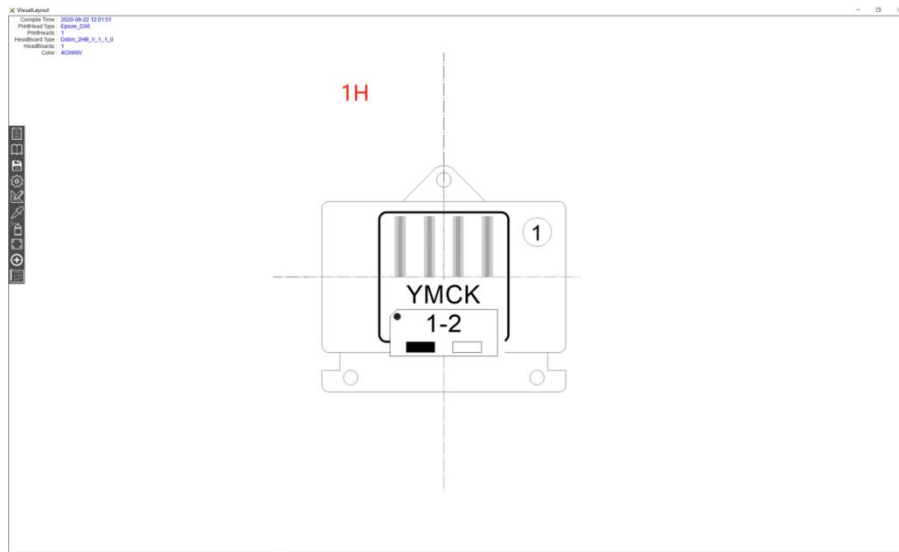


Cleaning Parameters	2022/4/19 9:12	文件夹	
ICC Profile_photoprint	2022/4/19 9:11	文件夹	
Layout-1H	2022/4/19 9:13	文件夹	
Printer Manager	2022/4/19 9:13	文件夹	
Updater_headboard 1H	2022/4/21 17:08	文件夹	
Updater_mainboard 1H_V10.0	2022/4/19 9:14	文件夹	
Updater_mainboard-1H	2022/3/31 9:31	文件夹	
Waveform	2022/3/31 9:31	文件夹	
dotNetFx40_Full_x86_x64	2019/2/27 14:40	应用程序	49,268 KB
PhotoPrint Installation manual	2022/4/7 15:11	Microsoft Edge PD...	8,017 KB
Win10 Setting before PM Installation.pdf	2022/4/7 14:46	Microsoft Edge PD...	1,392 KB

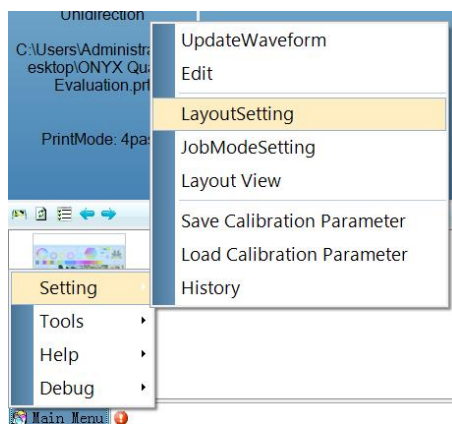
Cleaning Parameters	2022/4/22 10:55	文件夹	
ICC Profile_photoprint	2022/4/22 10:55	文件夹	
Layout-2H	2022/4/22 10:55	文件夹	
Printer Manager	2022/4/22 10:55	文件夹	
Updater_headboard 2H	2022/4/22 10:55	文件夹	
Updater_mainboard 2H_V10.0	2022/4/22 10:55	文件夹	
Waveform	2022/4/22 10:55	文件夹	
dotNetFx40_Full_x86_x64	2019/2/27 14:40	应用程序	49,268 KB
PhotoPrint Installation manual	2022/4/7 15:11	Microsoft Edge PD...	8,017 KB
Win10 Setting before PM Installation.pdf	2022/4/7 14:46	Microsoft Edge PD...	1,392 KB

② After you update layout, please click layout view to check if you update the right one.

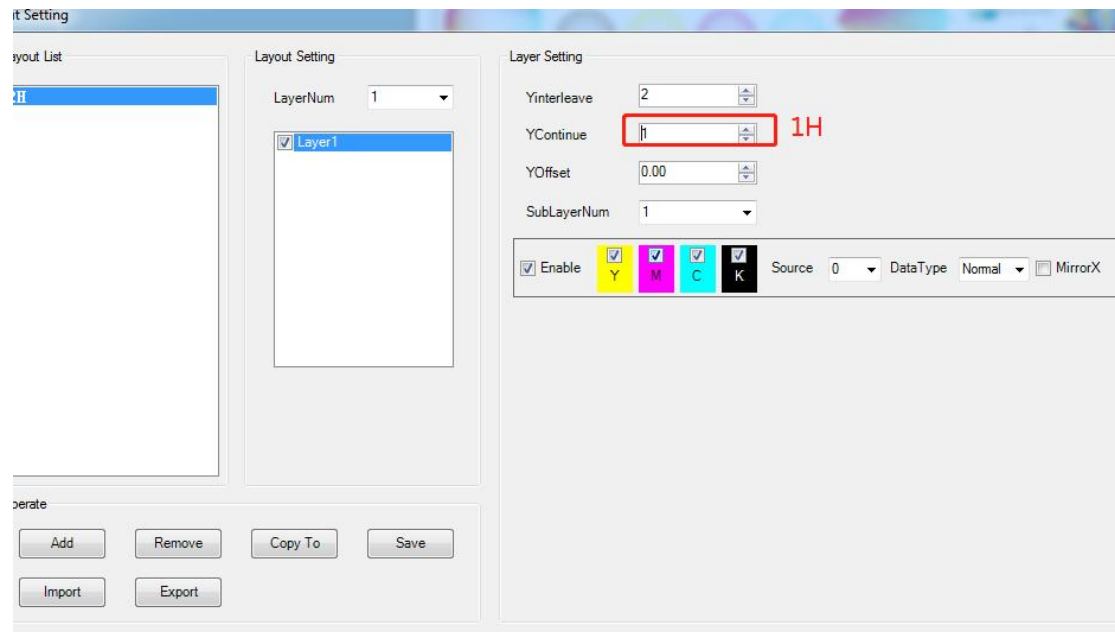




③ Layout setting

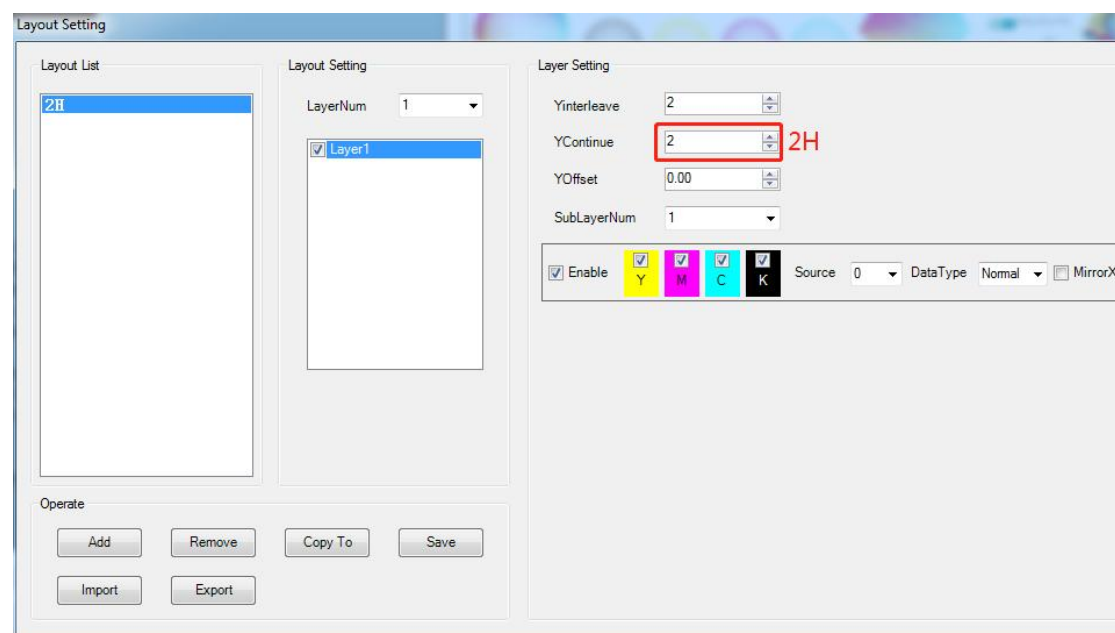


For a single head printer, make it like the following.

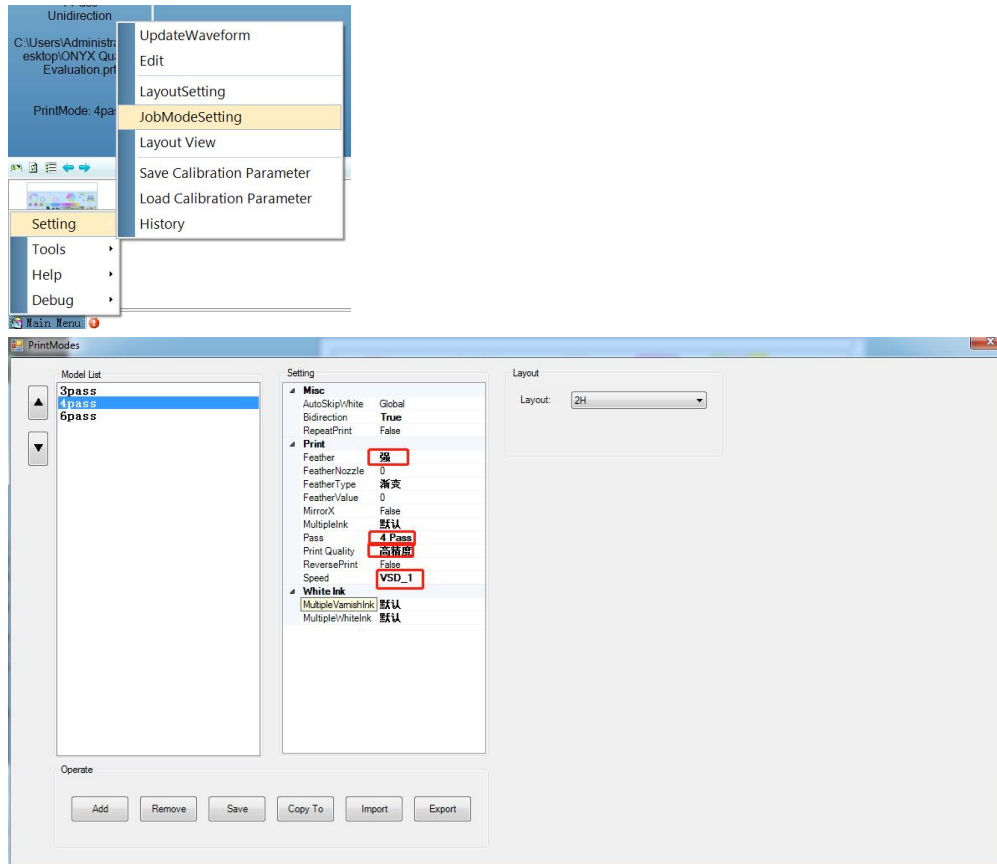


Note: Y Continue: head quantity

For a double heads printer, make it like the following

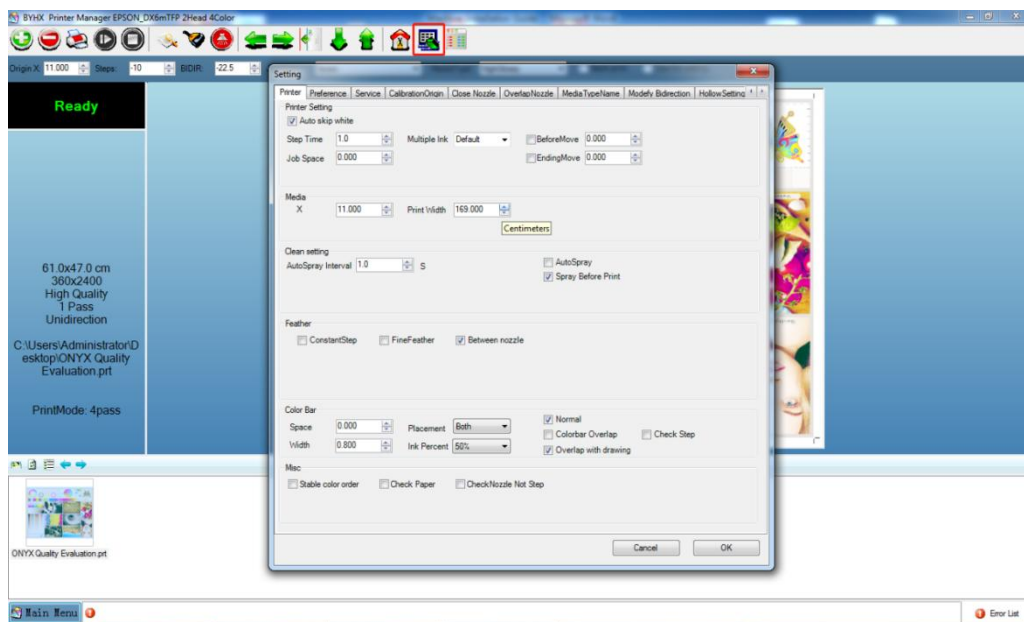


④ JobModeSetting

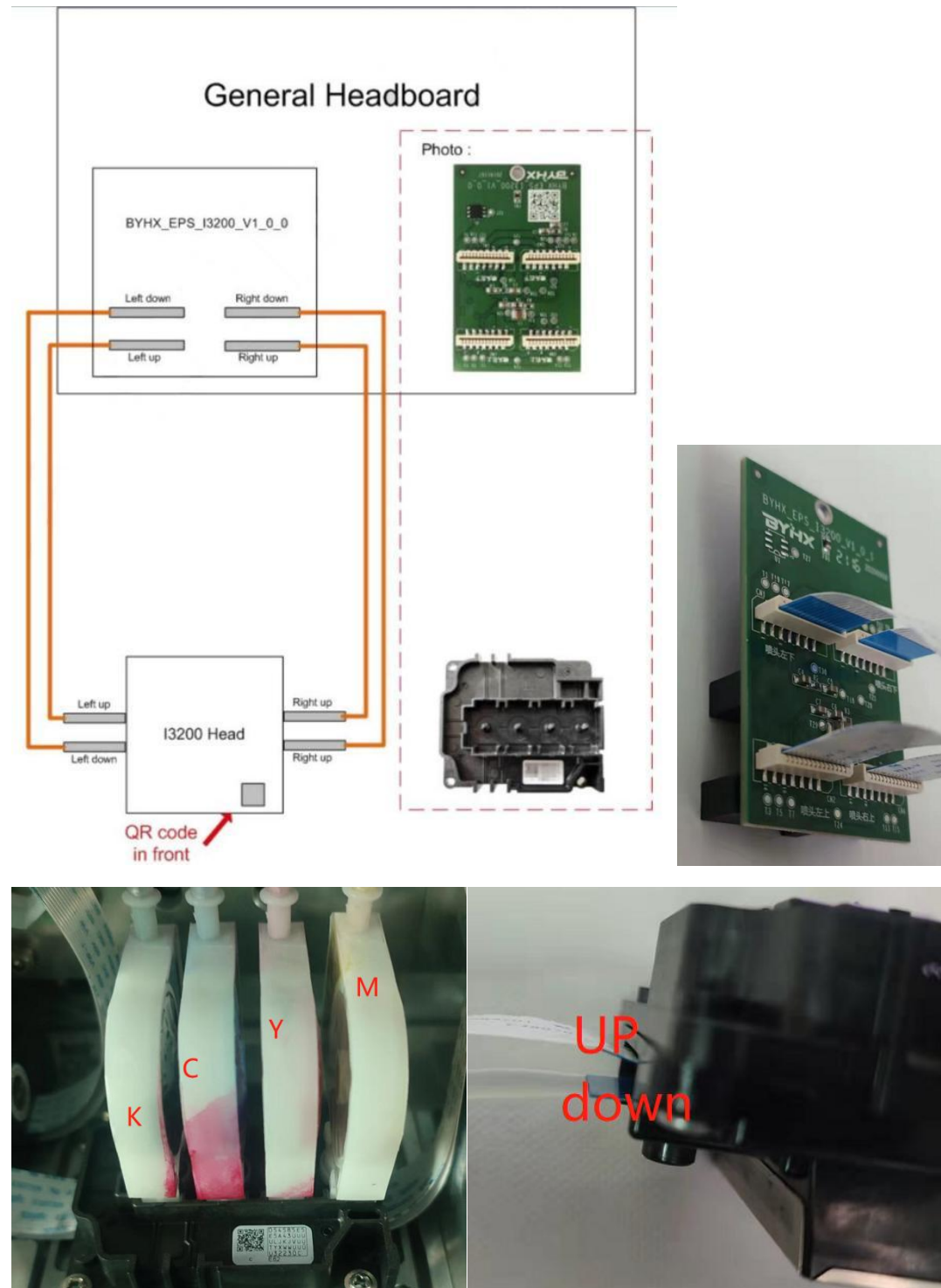


Recommend to use VSD1, strong feather, printer quality(High Precision)

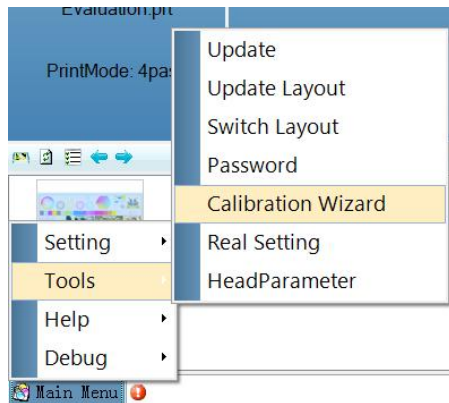
⑤ Edit



3 How to Install Printhead

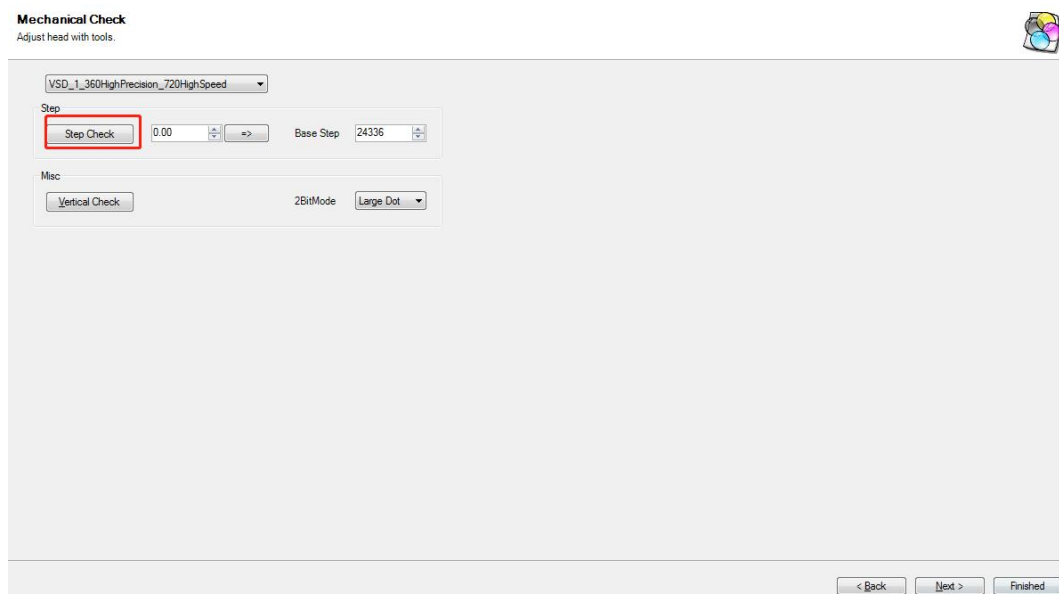


(1) How to do Calibration

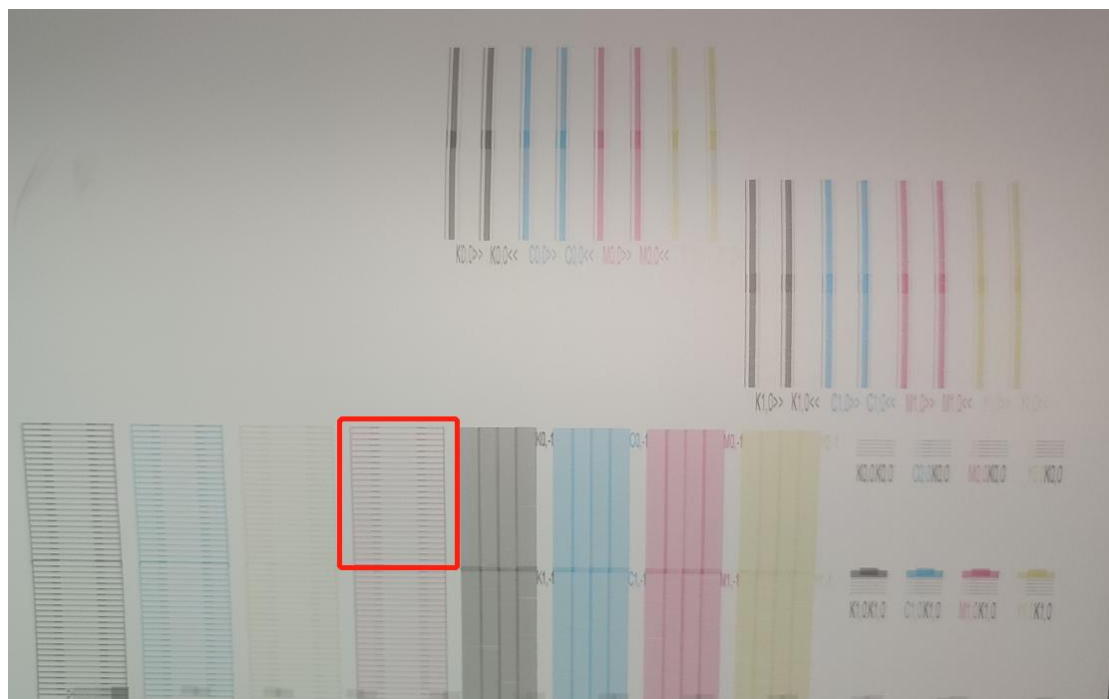
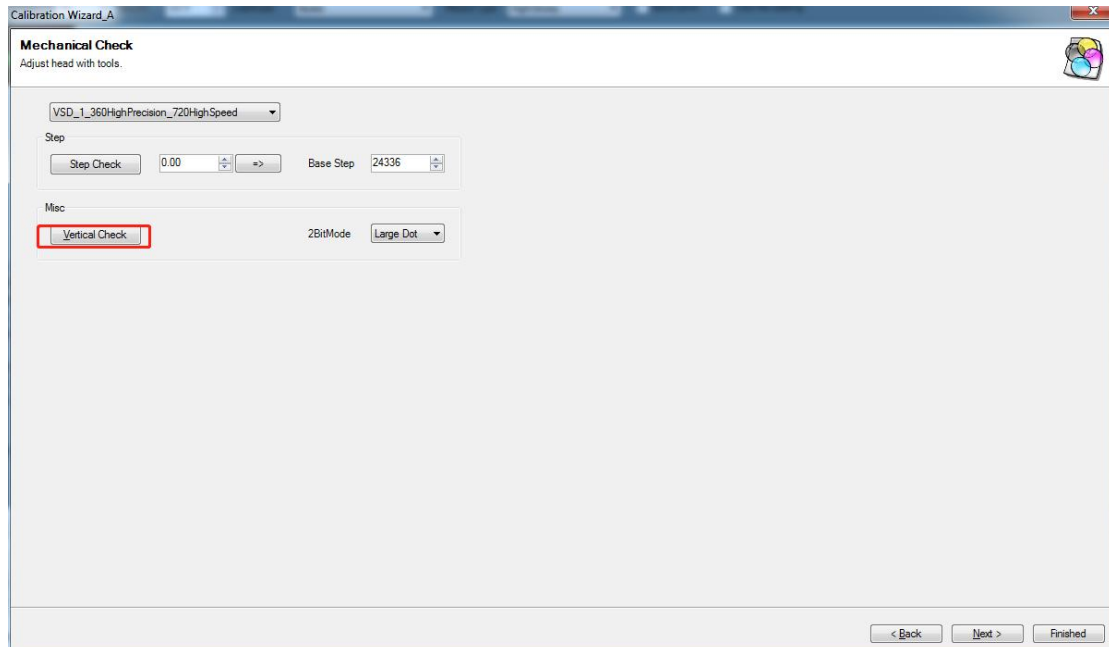


Calibration mode: Vsd 1 360 precision_720 high speed

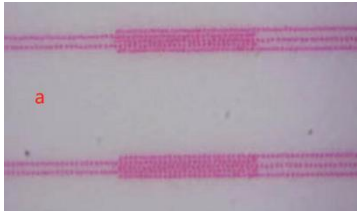
① Step Check Enter value according to the real Calibration image. After you click step check, the printer will print a calibration image.



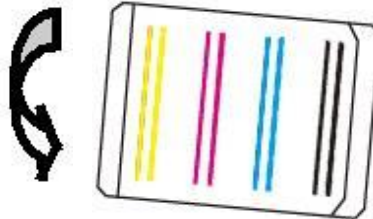
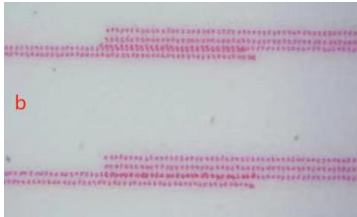
② Vertical check Also vertical calibration, it' s to adjust head angle so that printhead is aligned with the printing platform vertically. Usually, you need to adjust screws on the head plate.



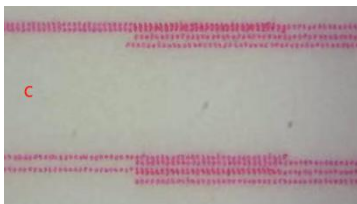
Recommend to use 80-100 magnifier to look at the right channel.



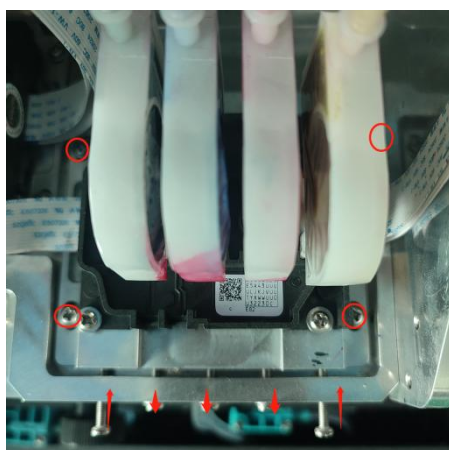
When it looks like the above, then it means your vertical check is perfect.



When condition **b** appears, it means that head lens to the right, then please adjust the screw as the arrow.



When condition **c** appears, it means that head lens to the left, then please adjust the screw as the arrow.

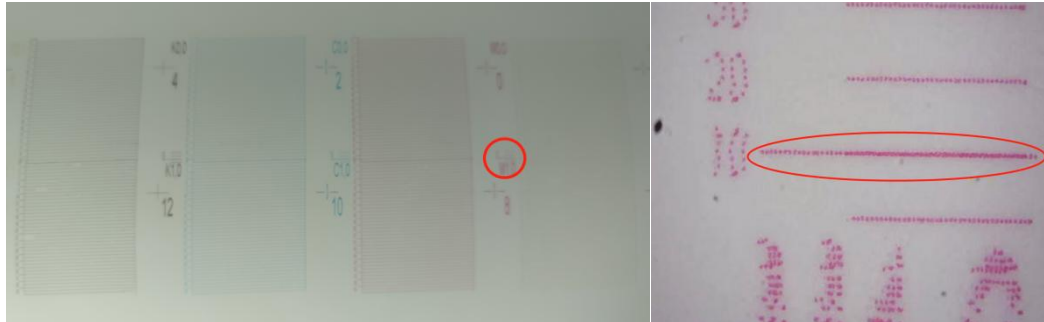


1. Before your adjustments, loose these four screws marked a circle. After you finish adjustment, fasten the screws.

2. The screws with arrow is the ones you need to do vertical calibration.

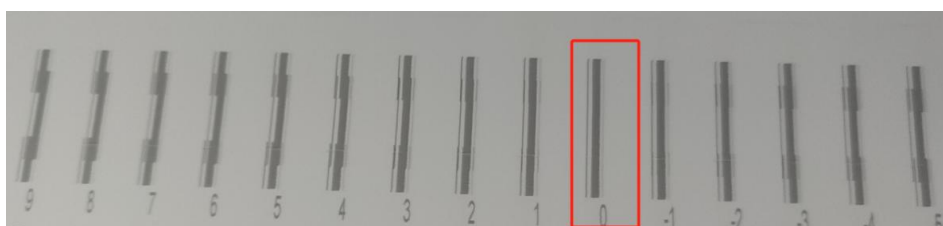
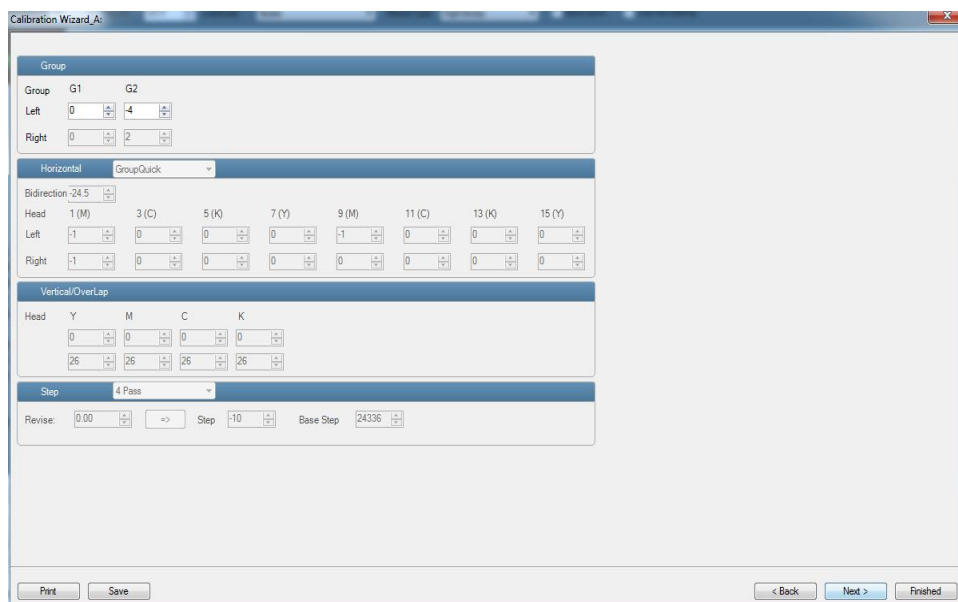
When installing double heads printer, you need to adjust head gap.

When you use printer manager to print nozzle check, adjust the second head so that the head gap is perfectly at 10.



③ Bidirection calibration Check if Value 0 is the perfect one, if not, do it perfect.

Single head printer only need to do Bidirection calibration, 2H or more heads printer need to all in the following image.



3. How to Install Photoprint

"PhotoPrint Installation manual" About how to install in details, please take a look

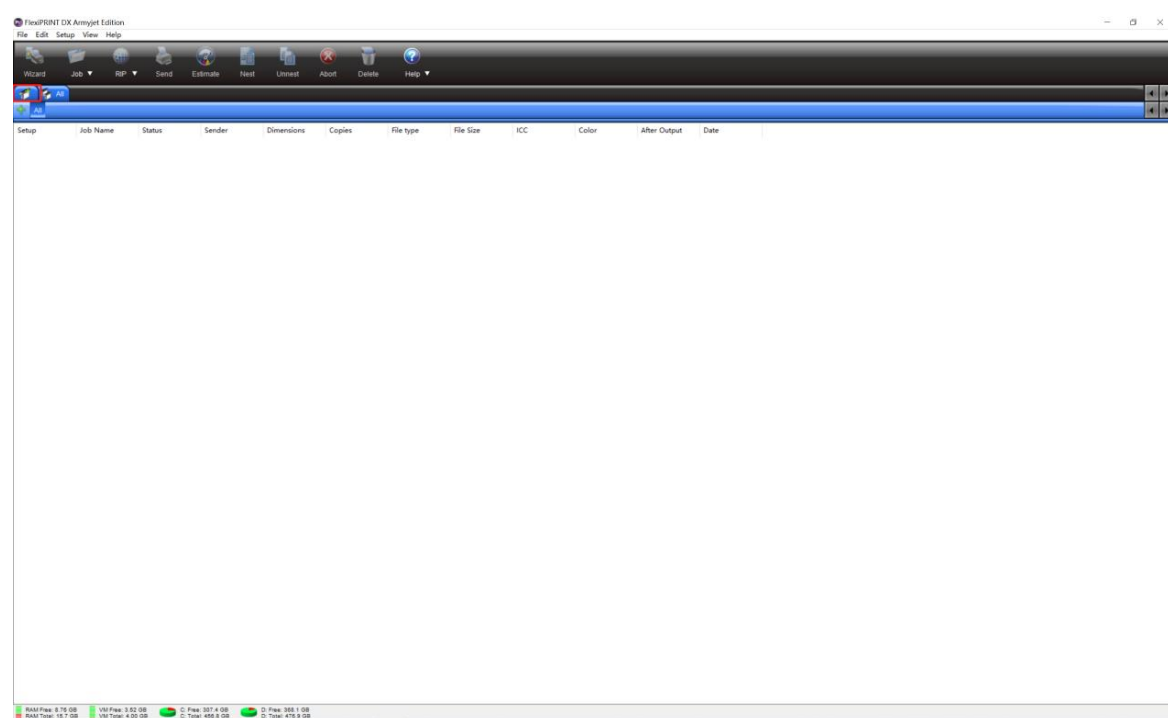
at PhotoPrint Installation manual.

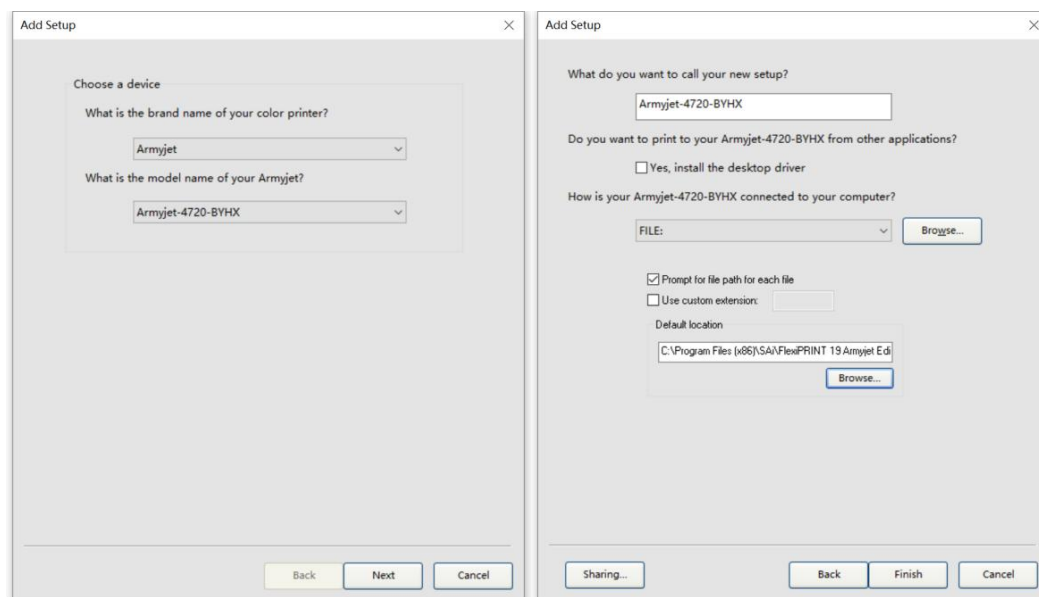
名前	修訂履歴	属性	サイズ
Cleaning Parameters	2022/4/22 10:48	文件夹	
ICC Profile_photoprint	2022/4/22 10:47	文件夹	
Layout-1H	2022/4/22 10:50	文件夹	
Printer Manager	2022/4/22 10:51	文件夹	
Updater_headboard 1H	2022/4/22 10:49	文件夹	
Updater_mainboard 1H_V10.0	2022/4/22 10:47	文件夹	
Waveform	2022/4/22 10:47	文件夹	
dotNetFx40_Full_x86_x64	2019/2/27 14:40	应用程序	49,268 KB
PhotoPrint Installation manual	2022/4/7 15:11	Microsoft Edge PD...	8,017 KB
Win10 Setting before PM Installation.pdf	2022/4/7 14:46	Microsoft Edge PD...	1,392 KB

① Click this Icon to open photoprint software.



② Add printer. Do as below.





③ Open the **ICC Profile_photoprint**

Cleaning Parameters	2022/4/19 9:12	文件夹	
ICC Profile_photoprint	2022/4/19 9:11	文件夹	
Layout-1H	2022/4/19 9:13	文件夹	
Printer Manager	2022/4/19 9:13	文件夹	
Updater_headboard 1H	2022/4/21 17:08	文件夹	
Updater_mainboard 1H_V10.0	2022/4/19 9:14	文件夹	
Updater_mainboard-1H	2022/3/31 9:31	文件夹	
Waveform	2022/3/31 9:31	文件夹	
dotNetFx40_Full_x86_x64	2019/2/27 14:40	应用程序	49,268 KB
PhotoPrint Installation manual	2022/4/7 15:11	Microsoft Edge PD...	8,017 KB
Win10 Setting before PM Installation.pdf	2022/4/7 14:46	Microsoft Edge PD...	1,392 KB

④ Copy all the files as below.

ICC Profile_photoprint > BYHX-ICC		在 BYHX-ICC 中搜索		
名称	修改日期	类型	大小	
AJ_I3200_ECO_3PASS 360x1800	2022/1/18 10:37	ICC 配置文件	3,306 KB	
AJ_I3200_ECO_4PASS 360x2400	2022/1/18 10:38	ICC 配置文件	3,306 KB	
AJ_I3200_ECO_6PASS 360x3600	2022/1/18 10:38	ICC 配置文件	3,306 KB	
AJ_I3200_ECO_6PASS_Light 360x3600 (1)	2022/1/18 10:38	ICC 配置文件	3,387 KB	
JTet_4pass 360x2400	2021/8/23 23:39	ICC 配置文件	1,318 KB	
TJet_6pass 360x3600	2021/8/23 23:45	ICC 配置文件	1,318 KB	

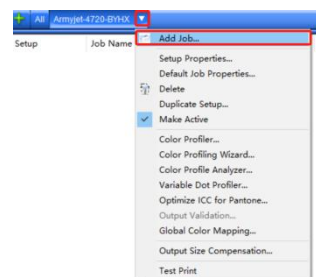
⑤ Open the file where you install photoprint and find ICC profile→BYHX-4720, and the paste them here.

« FlexiPRINT 19 Armyjet Edition » ICCProfile » BYHX-4720

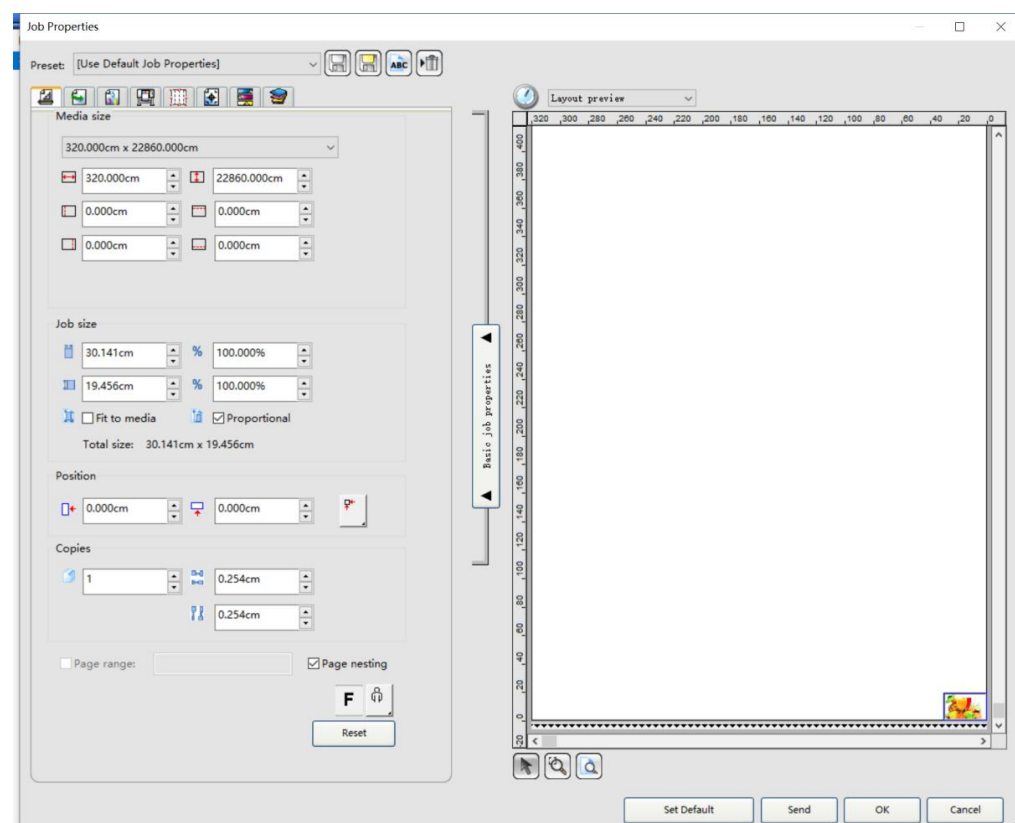
在 BYHX-4720 中搜索

名称	修改日期	类型	大小
AJ_I3200_ECO_3PASS 360x1800	2022/1/18 10:37	ICC 配置文件	3,306 KB
AJ_I3200_ECO_4PASS 360x2400	2022/1/18 10:38	ICC 配置文件	3,306 KB
AJ_I3200_ECO_6PASS 360x3600	2022/1/18 10:38	ICC 配置文件	3,306 KB
AJ_I3200_ECO_6PASS_Light 360x3600 (1)	2022/1/18 10:38	ICC 配置文件	3,387 KB
JTet_4pass 360x2400	2021/8/23 23:39	ICC 配置文件	1,318 KB
TJet_6pass 360x3600	2021/8/23 23:45	ICC 配置文件	1,318 KB

⑥ Add Job



Edit the image



Choose output profile and then click Send.

